

# Giving Your Store The Extra Oomph!

**Store**  
Lights

**Product** Catalog  
2022-23

**Store**  
Lights



# INDEX

Retail Revolution:  
How Times Have Changed? **03-04**

Lighting: Why is it at Key Element  
in Store Construction & Planning? **05-06**

Some Other Ways in Which  
Lighting can Impact Your Business **07**

IKIO, Making Your Vision of  
Store Lighting Come True! **08**

How Do We Make Store  
Lighting Super Accessible? **09-10**

## Track Lights **11-12**

Amplic **14**



Alem **14**



Alem 2 **15**



Prime **16**



Optik **17**



Valko **18**



Bolide **19**



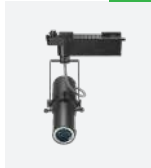
Saurin **20**



Ork **21**



Rimin **22**



Trang **23**

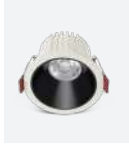


# Downlights 24-25

Helm 3 **26** Zoom 2 **27** Elio **28** Glem **29** Spiro **30** Lumos **31** Theia **32**



Olivio **33** Glint **34** Ocul **35** Nova **36** Scint **37** Odin **38** Stella **39**



Glim **40** Flare **41** Lumin **42** Aspro **43** Orim **44** Avant **45** Triad **46**



Pistone **47** Cubra **48** Glisten **49** Levin **50** Bolt **51**



# Pendant Lights 52-53

Remus **54** Aurora **55** Eos **56** Daze **57** Mica **58** Flaxo **59**



Cross Reference Guide

60-61

Know More About IKIO

62





## Retail Revolution: How Times Have Changed?

While the internet has made shopping more convenient for us, many people still don't prefer buying merchandise without touching, smelling, or experiencing it firsthand.

In fact, according to a recent survey that includes over 1,000 U.S. consumers, it is found that most millennials like to visit brick-and-mortar retail stores far more than their online counterparts. To be more specific, half of the millennials (about 56%) surveyed accepted to have regularly shopped in physical stores at least once a week. Their reason seemed to vary for this — from the benefit of avoiding delivery fees to the convenience of immediate possession of the item to the interactive experience of trying or seeing a product in person.

That's why it is crucial for store owners to ramp up their commercial space, as it can highly influence their brand perception and help them gain more customers in the long run.



# Lighting: Why is it a Key Element in Store Construction & Planning?

While lighting during a store's construction & planning process is often given the least amount of importance, it in fact contributes majorly in setting the mood and influencing the people's buying decisions. Studies over the years have proved that quality lighting in stores also boosts the overall sales of a business.

**To better understand this, let's have a look at what Gerry Weber did!**



Gerry Weber, a German fashion retailer, installed high-end retail lights in his store to highlight his key merchandise. He realized that the targeted customers felt comparatively more comfortable and spent more time exploring the merchandise. This boosted the sales of his business by an average of 10%.



# Some Other Ways in Which Lighting Can Impact Your Business



## Target Group Appropriate Lighting

The change in intensity, color, color temperature, contrast, and uniformity of store lights has the ability to grab the attention of your target audience and influence their buying decision.



## Revealing Authenticity

Quality lighting in a store with excellent color rendering index and special light spectrums has the ability to reveal the true color and quality of the merchandise.



## Adding an Element of Design to the Ceilings

Smart lighting solutions with elegant designs also contribute to enhancing the overall aesthetics of the stores. The extremely large ceiling areas in the retail outlets can be made more presentable with well-designed and exquisite store lights.



## Soft Illumination

The modern LED store lights are virtually free from all sorts of harmful emissions such as infrared radiation or UV radiation that can deteriorate the quality of your merchandise.

# IKIO, Making Your Vision of Store Lighting Come True!

IKIO's ability to tune into customers' unique needs and deliver industry-forward solutions is what makes us stand out from other brands. We value every client's vision and therefore offer custom-made solutions that perfectly align with it.

## Disrupting Limitations in Store Lighting Through **Customized LED Solutions**

### Other Brands



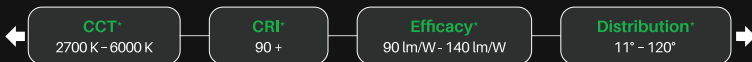
Bound By Limitations

V/S

### IKIO

## No Limitations: **We Customize Everything!**

IKIO offers the best in everything based on your requirements.



\*Note: All of these can be customized as per your need.








# How Do We Make Store Lighting Super Accessible?

- We source all our components — LEDs, drivers, optics — only from the best vendors.
- We have high-end technology such as Goniometer, helping us deliver solutions without delays.
- We offer thorough assistance with the lighting layout so you can make the best of our solutions.
- We continuously innovate to develop solutions — such as our MARVELA SERIES — that bring down the hassle of complete fixture overhauls in stores.
- We are US-based, executing nationwide deliveries in a quick and efficient manner.

# Track Lights

Track Lights, also called Accent Lights, add drama to a space by creating visual interest. Whether it is a small convenience store or a large department store, IKIO's track lights can be arranged in any space irrespective of the size. They can either be used as spot lights to highlight only a certain section of your store or they can be used to evenly illuminate the whole store.

-  Can be surface mounted, recessed, or suspended.
-  Are highly customizable, low maintenance, and flexible.
-  Allow you to create the desired visual effect.



# Amplic

## Track Light



Amplic is a technologically advanced LED track light with incorporated electronic gear and chip on board. It also has a high-quality reflector with different beam spreads. Moreover, the lamp housing of die-cast aluminum for optimal cooling allows the fixture to last longer than its traditional counterparts.

### › Technical Parameters

<b>Voltage</b>	100 - 277 V AC, 50-60 Hz
<b>Light Source</b>	Osram SOLERIQ S 19
<b>Operating Position</b>	Swiveling Type
<b>Start Time</b>	Instant
<b>Driver</b>	Built in Isolated Driver, Flicker Free
<b>Beam Spread</b>	From Narrow to Wide, From Round to Square and Other Shapes

CRI	Power (W)	CCT (K)	Total Lumen Output (lm)	Finish
>90	20	3000	2800	White

### › Model/Colors

Available in White.

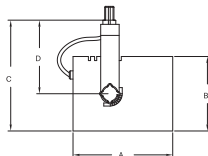


### › Application Areas

Track Light for Indoor Applications.



### › Technical Drawing



### › Beam Spread (Options)

Spot		Medium		Flood		Wide Flood	
12°		24°		36°		60°	
ft	ø	ft	ø	ft	ø	ft	ø
3.0	0.72	3.0	1.41	3.0	2.03	3.0	3.15
9.0	2.15	9.0	4.22	9.0	6.09	9.0	9.45
15.0	3.58	15.0	7.04	15.0	10.15	15.0	15.75

**Note:** Product available in other Kelvin temperatures on request.

# Alem

## Track Light

Alem is a technologically advanced LED track light with incorporated electronic gear and chip on board. It also has a high-quality reflector with four different beam spreads. Moreover, the lamp housing of die-cast aluminum for optimal cooling allows the fixture to last longer than its traditional counterparts.



### > Technical Parameters

<b>Voltage</b>	100 - 277 V AC, 50-60 Hz
<b>Light Source</b>	Osram SOLERIQ S 19
<b>Operating Position</b>	Swiveling Type
<b>Start Time</b>	Instant
<b>Driver</b>	Stand Alone (Included)
<b>Beam Spread</b>	Spot, Medium, Flood, Wide Flood
<b>Dimming</b>	Triac Dimming

CRI	Power (W)	CCT (K)	Total Lumen Output (lm)	Finish
>90	20 / 30	2700	2800 / 4200	Black / White
>90	20 / 30	3000	2900 / 4250	Black / White
>90	20 / 30	4000	3000 / 4350	Black / White
>90	20 / 30	6000	3100 / 4550	Black / White

### > Model/Colors

Available in Black and White.

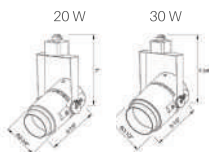


### > Application Areas

Track Light for Indoor Applications.



### > Technical Drawing



### > Beam Spread (Options)

Spot	15°		Medium 24°		Flood 38°		Wide Flood 60°	
	ft	ø	ft	ø	ft	ø	ft	ø
3.0	0.72	3.0	1.41	3.0	2.03	3.0	3.15	
9.0	2.15	9.0	4.22	9.0	6.09	9.0	9.45	
15.0	3.58	15.0	7.04	15.0	10.15	15.0	15.75	

**Note:** Product available in other Kelvin temperatures on request.



# Alem 2

## Track Light

Alem 2 is a technologically advanced LED track light with incorporated electronic gear and chip on board. It also has a high-quality reflector with four different beam spreads. Moreover, the lamp housing of die-cast aluminum for optimal cooling allows the fixture to last longer than its traditional counterparts.



### > Technical Parameters

<b>Voltage</b>	100 - 270 V AC, 50-60 Hz
<b>Light Source</b>	Bridgelux V13
<b>Operating Position</b>	Swiveling Type
<b>Start Time</b>	Instant
<b>Driver</b>	IK-LKAD029DC-05242
<b>Beam Spread</b>	Spot, Medium, Flood, Wide Flood
<b>Dimming</b>	0-10 V

Circuit	Power (W)	CCT (K)	Total Lumen Output (lm)	Finish
1 Circuit	28	4000	3800	Black
1 Circuit	28	4000	3800	White
3 Circuit	28	4000	3800	Black
3 Circuit	28	4000	3800	White

### > Model/Colors

Available in Black and White.



### > Application Areas

Track light for Indoor Applications.



### > Beam Spread (Options)

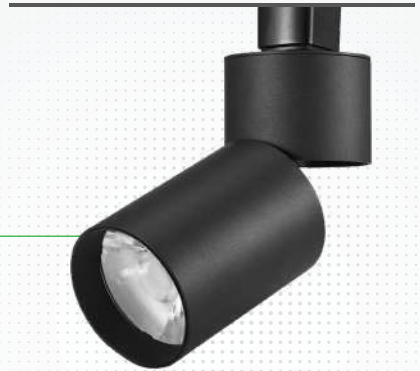
Spot		Medium		Flood		Wide Flood	
15°		24°		36°		60°	
ft	ø	ft	ø	ft	ø	ft	ø
3.0	0.72	3.0	1.41	3.0	2.03	3.0	3.15
9.0	2.15	9.0	4.22	9.0	6.09	9.0	9.45
15.0	3.58	15.0	7.04	15.0	10.15	15.0	15.75

- Note:**
1. LED Driver:- IKIO uses own manufactured LED driver with toughest design and high surge & voltage withstanding capabilities.
  2. Product available in other Kelvin temperatures on request.
  3. Wattages & beam spreads can be customized as per the requirement.

# Prime

## Track Light

Prime is a technologically advanced LED track light with incorporated electronic gear and chip on board. It also has a high-quality reflector with three different beam spreads. Moreover, the lamp housing of die-cast aluminum for optimal cooling allows the fixture to last longer than its traditional counterparts.



### > Technical Parameters

<b>Voltage</b>	100 - 277 V AC, 50-60 Hz
<b>Light Source</b>	Osram SOLERIQ S 19
<b>Operating Position</b>	Swiveling Type
<b>Start Time</b>	Instant
<b>Driver</b>	Stand Alone (Included)
<b>Beam Spread</b>	Spot, Medium, Flood
<b>Dimming</b>	Triac Dimming

CRI	Power (W)	CCT (K)	Total Lumen Output (lm)	Finish
>90	20	2700	2800	Black / White
>90	20	3000	2900	Black / White
>90	20	4000	3000	Black / White
>90	20	5000	3100	Black / White

### > Model/Colors

Available in Black and White.

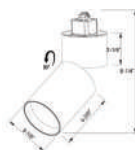


### > Application Areas

Track Light for Indoor Applications.



### > Technical Drawing



### > Beam Spread (Options)

Spot			Medium			Flood		
11°			24°			36°		
ft	ø		ft	ø		ft	ø	
3.0	0.72		3.0	1.41		3.0	2.03	
9.0	2.15		9.0	4.22		9.0	6.09	
15.0	3.58		15.0	7.04		15.0	10.15	

**Note:** Product available in other Kelvin temperatures on request.

# Optik

## Track Light

Optik is a technologically advanced LED track light with incorporated electronic gear and chip on board. It also has a high-quality reflector with multiple beam spreads. Moreover, the lamp housing of die-cast aluminum for optimal cooling allows the fixture to last longer than its traditional counterparts.

### > Technical Parameters

<b>Voltage</b>	100 - 277 V AC, 50-60 Hz
<b>Light Source</b>	Osram SOLERIQ S 19
<b>Operating Position</b>	Swiveling Type
<b>Start Time</b>	Instant
<b>Driver</b>	Stand Alone (Included)
<b>Beam Spread</b>	Spot, Medium, Flood, Wide Flood (Adjustable)
<b>Dimming</b>	Triac Dimming



CRI	Power (W)	CCT (K)	Total Lumen Output (lm)	Finish
>90	15 / 20	2700	2100 / 2800	Black / White
>90	15 / 20	3000	2250 / 2900	Black / White
>90	15 / 20	4000	2350 / 3000	Black / White
>90	15 / 20	5000	2500 / 3100	Black / White

### > Model/Colors

Available in Black and White.



### > Application Areas

Track Light for Indoor Applications.



### > Technical Drawing



### > Beam Spread (Adjustable)

Spot		Medium		Flood		Wide Flood	
11°		24°		36°		60°	
ft	ø	ft	ø	ft	ø	ft	ø
3.0	0.72	3.0	1.41	3.0	2.09	3.0	3.15
9.0	2.15	9.0	4.22	9.0	6.09	9.0	9.45
15.0	3.58	15.0	7.04	15.0	10.15	15.0	15.75

**Note:** 1. Product available in other Kelvin temperatures on request.  
2. Ra>97 can be made at extra cost.

# Valko

## Track Light

Valko is a technologically advanced LED track light with incorporated electronic gear and chip on board. It also has a high-quality reflector with four different beam spreads. Moreover, the lamp housing of die-cast aluminum for optimal cooling allows the fixture to last longer than its traditional counterparts.



### > Technical Parameters

<b>Voltage</b>	100 - 277 V AC, 50-60 Hz
<b>Light Source</b>	Osram SOLERIQ S 19
<b>Operating Position</b>	Swiveling Type
<b>Start Time</b>	Instant
<b>Driver</b>	Stand Alone (Included)
<b>Beam Spread</b>	Spot, Medium, Flood, Wide Flood
<b>Dimming</b>	Triac Dimming

CRI	Power (W)	CCT (K)	Total Lumen Output (lm)	Finish
>90	30	2700	4200	Black / White
>90	30	3000	4350	Black / White
>90	30	4000	4400	Black / White
>90	30	5000	4550	Black / White

### > Model/Colors

Available in Black and White.

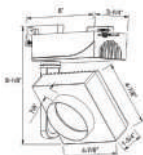


### > Application Areas

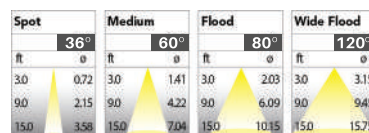
Track Light For Indoor Applications.  
Suitable for Big Furniture Using,  
Such As Sofa and Bed.



### > Technical Drawing



### > Beam Spread (Options)



**Note:** 1. Product available in other Kelvin temperatures on request.  
2. 35 W max can be made.

# Bolide

## Track Light

Bolide is a technologically advanced LED track light with incorporated electronic gear and chip on board. It also has a high-quality reflector with different beam spreads. Moreover, the lamp housing of die-cast aluminum for optimal cooling allows the fixture to last longer than its traditional counterparts.



### > Technical Parameters

<b>Voltage</b>	100 - 277 V AC, 50-60 Hz
<b>Light Source</b>	Osram SOLERIQ S 19
<b>Operating Position</b>	Swiveling Type
<b>Start Time</b>	Instant
<b>Driver</b>	Stand Alone (Included)
<b>Beam Spread</b>	Spot, Medium, Flood, Wide Flood (options)
<b>Dimming</b>	Triac Dimming

CRI	Power (W)	CCT (K)	Total Lumen Output (lm)	Finish
>90	30	2700	4200	Black / White
>90	30	3000	4350	Black / White
>90	30	4000	4450	Black / White
>90	30	5000	4550	Black / White

### > Model/Colors

Available in Black and White.



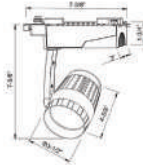
### > Application Areas

Track Light for Indoor Applications. Looks Small and Elegant. More Suitable for Ladies & Kids' Clothes Shops.

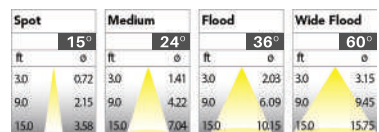


**Note:** Product available in other Kelvin temperatures on request.

### > Technical Drawing



### > Beam Spread (Options)



# Saurin

## Track Light

Saurin is a technologically advanced LED track light with incorporated electronic gear and chip on board. It also has a high-quality reflector with four different beam spreads. Moreover, the lamp housing of die-cast aluminum for optimal cooling allows the fixture to last longer than its traditional counterparts.



### > Technical Parameters

<b>Voltage</b>	100 - 277 V AC, 50-60 Hz
<b>Light Source</b>	Osram SOLERIQ S 19
<b>Operating Position</b>	Swiveling Type
<b>Start Time</b>	Instant
<b>Driver</b>	Stand Alone (Included)
<b>Beam Spread</b>	Spot, Medium, Flood, Wide Flood
<b>Dimming</b>	Triac Dimming

CRI	Power (W)	CCT (K)	Total Lumen Output (lm)	Finish
>90	30 / 55	2700	4200 / 7700	Black / White
>90	30 / 55	3000	4350 / 7750	Black / White
>90	30 / 55	4000	4400 / 7800	Black / White
>90	30 / 55	5000	4550 / 7850	Black / White

### > Model/Colors

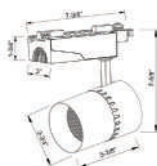
Available in Black and White.



### > Application Areas

Track Light for Indoor Applications. The Lighting Part with Strong Design. More Suitable for Men's Clothes Shops.

### > Technical Drawing



### > Beam Spread (Options)

Spot		Medium		Flood		Wide Flood	
15°		24°		36°		60°	
ft	o	ft	o	ft	o	ft	o
3.0	0.72	3.0	1.41	3.0	2.03	3.0	3.15
9.0	2.15	9.0	4.22	9.0	6.09	9.0	9.45
15.0	3.58	15.0	7.04	15.0	10.15	15.0	15.75

**Note:** Product available in other Kelvin temperatures on request.

# Ork

## Track Light



Ork is a technologically advanced LED track light with incorporated electronic gear and chip on board. It also has a high-quality reflector with different beam spreads. Moreover, the lamp housing of die-cast aluminum for optimal cooling allows the fixture to last longer than its traditional counterparts.

### > Technical Parameters

<b>Voltage</b>	100 - 277 V AC, 50-60 Hz
<b>Light Source</b>	Osram SOLERIQ S 19
<b>Operating Position</b>	Swiveling Type
<b>Start Time</b>	Instant
<b>Driver</b>	Stand Alone (Included)
<b>Beam Spread</b>	Spot, Medium, Flood, Wide Flood (Adjustable)
<b>Dimming</b>	Triac Dimming

CRI	Power (W)	CCT (K)	Total Lumen Output (lm)	Finish
>90	20 / 30	2700	2800 / 4200	Black / White
>90	20 / 30	3000	2900 / 4350	Black / White
>90	20 / 30	4000	3000 / 4400	Black / White
>90	20 / 30	5000	3100 / 4550	Black / White

### > Model/Colors

Available in Black and White.

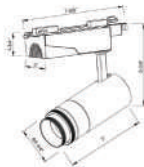


### > Application Areas

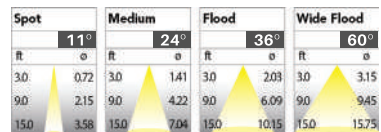
Track Light for Indoor Applications.



### > Technical Drawing



### > Beam Spread (Adjustable)

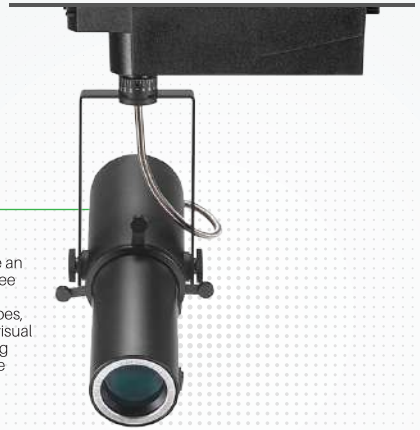


**Note:** 1. Product available in other Kelvin temperatures on request.  
2. Ra>97 can be made at extra cost.

# Rimin

## Projector Light

Rimin Projector Light is a versatile lighting solution designed for adaptability, aesthetics, and dynamic projection capabilities. Its advanced features include an electronic gear, a chip on board, and a high-quality reflector that supports three different beam angles. It is 15° to 60° adjustable, which empowers you with tailored precise illumination. In addition, the projection options in various shapes, such as round, square, and more, allow you to effortlessly create captivating visual displays. Moreover, the lamp housing of die-cast aluminum for optimal cooling allows the fixture to last longer than its traditional counterparts. Experience the seamless fusion of functionality and aesthetics with Rimin Projector Light!



### › Technical Parameters

<b>Voltage</b>	100 - 277 V AC, 50-60 Hz
<b>Light Source</b>	Osram SOLERIQ S 19
<b>Operating Position</b>	Swiveling Type
<b>Start Time</b>	Instant
<b>Driver</b>	Stand Alone (Included)
<b>Shapes</b>	Comes in Narrow, Wide, Round, Square, and Other Shapes
<b>Dimming</b>	Triac Dimming, Local Dimming

CRI	Power (W)	CCT (K)	Total Lumen Output (lm)	Finish
>90	20 / 30	2700	2800 / 4200	Black
>90	20 / 30	3000	2900 / 4350	Black
>90	20 / 30	4000	3000 / 4400	Black
>90	20 / 30	5000	3000 / 4400	Black

### › Model/Colors

Available in Black.

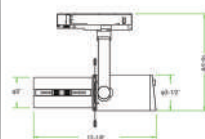


### › Application Areas

Projector Light for Indoor Applications.

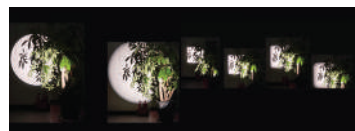


### › Technical Drawing



### › Beam Spread / Shapes

15° to 60° (Adjustable)



**Note:** 1. Product available in other Kelvin temperatures on request.  
2. Ra>97 can be made at extra cost.



# Trang

## Track Light

Trang is a technologically advanced LED track light with incorporated electronic gear and chip on board. It also has a high-quality reflector with four different beam spreads. Moreover, the lamp housing of die-cast aluminum for optimal cooling allows the fixture to last longer than its traditional counterparts.

### > Technical Parameters

<b>Voltage</b>	100 - 277 V AC, 50-60 Hz
<b>Light Source</b>	Osram SOLERIQ S 19
<b>Operating Position</b>	Swiveling Type
<b>Start Time</b>	Instant
<b>Driver</b>	Stand Alone (Included)
<b>Beam Spread</b>	Spot, Medium, Flood, Wide Flood
<b>Dimming</b>	Triac Dimming



CRI	Power (W)	CCT (K)	Total Lumen Output (lm)	Finish
>90	15 / 20 / 30	2700	2100 / 2800 / 4200	Black / White
>90	15 / 20 / 30	3000	2250 / 2900 / 4350	Black / White
>90	15 / 20 / 30	4000	2350 / 3000 / 4400	Black / White
>90	15 / 20 / 30	5000	2500 / 3100 / 4550	Black / White

### > Model/Colors

Available in Black and White.

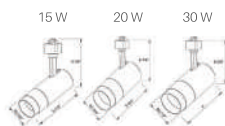


### > Application Areas

Track Light for Indoor Applications.



### > Technical Drawing



### > Beam Spread (Options)




Spot		Medium		Flood		Wide Flood	
15°		24°		38°		60°	
ft	ø	ft	ø	ft	ø	ft	ø
3.0	0.72	3.0	1.41	3.0	2.03	3.0	3.15
9.0	2.15	9.0	4.22	9.0	6.09	9.0	9.45
15.0	3.58	15.0	7.04	15.0	10.15	15.0	15.75

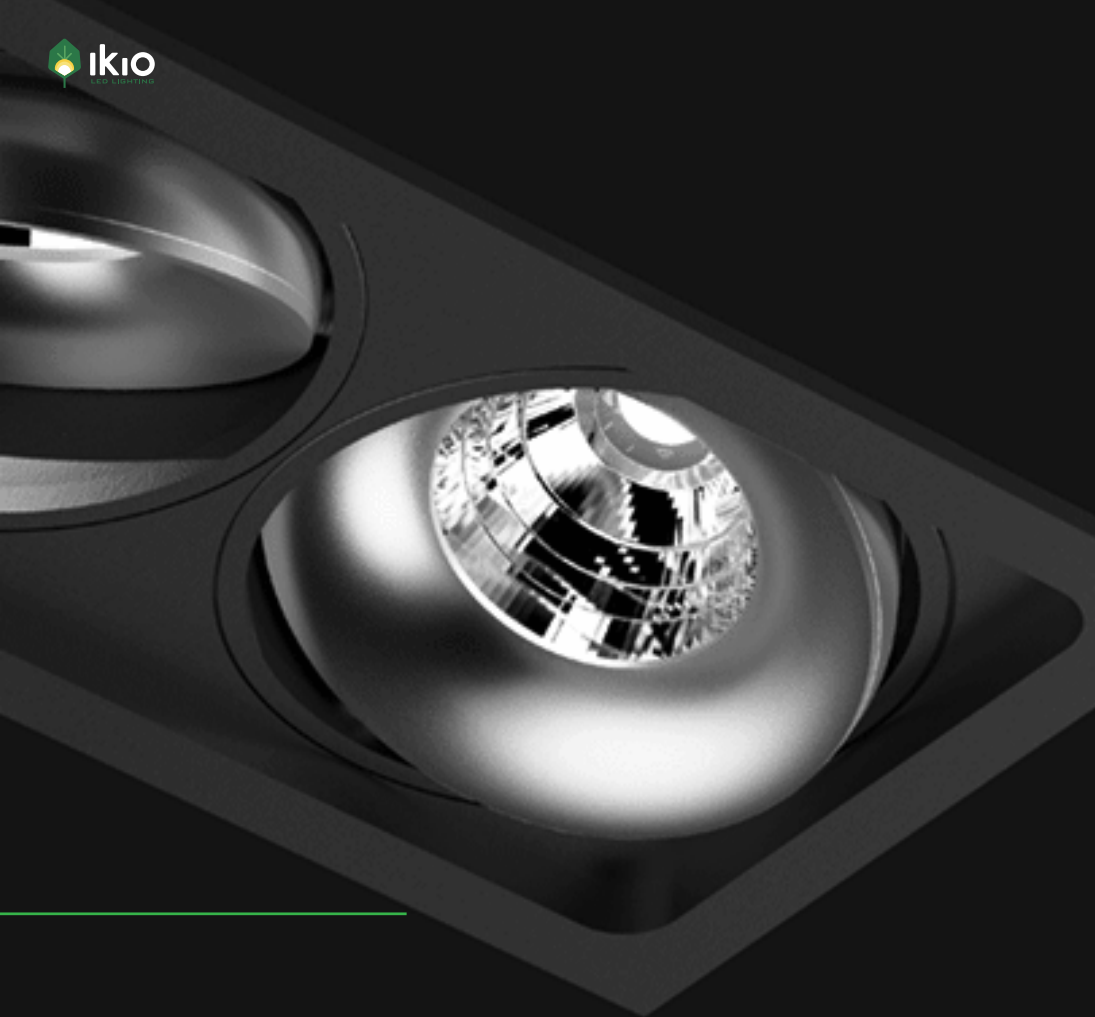
**Note:** Product available in other Kelvin temperatures on request.

# Downlights

---

Downlights, also called Ambient Lights, help in the overall illumination of a space. Their main function is to illuminate the space to a comfortable level of brightness. These lights cater to almost all kinds of retail spaces and sometimes even commercial spaces.

-  They are installed into a hollow opening in the ceiling.
-  The color temperature of a downlight helps set the ambience.
-  They barely take any vertical space in the place of installation.



# Helm 3

## Downlight

Helm 3 recessed downlight is a cylindrical shaped fixture that illuminates a store in the most effective manner without being obtrusive. The smart engineering of this luminaire with a specular reflector & power grid/global connectors, along with high voltage standing in-house LED driver, makes it an ideal choice for lighting your stores.



### > Technical Parameters

<b>Voltage</b>	100 - 270 V AC, 50-60 Hz
<b>Light Source</b>	Bridgelux V13
<b>Operating Position</b>	Vertical/Retractable
<b>Start Time</b>	Instant
<b>Driver</b>	IK-PA30B-420050-W-A
<b>Optics</b>	Aluminum Reflector
<b>Dimming</b>	0-10 V

Head	Efficacy (lm/W)	Power (W)	CCT (K)	Total Lumen Output (lm)	Beam Spread (Options)	Finish
Single Head	100	15	4000	1500	36°	White
Single Head	130	20	4000	2600	36°	White
Double Head	100	15 x 2	4000	3000	36°	White
Double Head	130	20 x 2	4000	5200	36°	White
Triple Head	100	15 x 3	4000	4500	36°	White
Triple Head	130	20 x 3	4000	7800	36°	White

### > Model/Colors

Available In White.



### > Application Areas

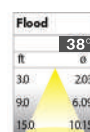
Downlight For Indoor Applications.



### > Technical Drawing



### > Beam Spread (Options)



- Note:**
1. LED Driver- IKIO uses own manufactured LED driver with toughest design and high surge & voltage withstanding capabilities.
  2. Product available in other Kelvin temperatures on request.
  3. Wattages & beam spreads can be customized as per the requirement.

# Zoom 2

## Downlight



Zoom 2 recessed downlight is a cylindrical shaped fixture that illuminates a store in the most effective manner without being obtrusive. The smart engineering of this luminaire with specular reflector & power grid/global connectors, along with a high voltage standing in-house LED driver, makes it an ideal choice for lighting your stores.

### › Technical Parameters

<b>Voltage</b>	100 - 270 V AC, 50-60 Hz
<b>Light Source</b>	Bridgelux V13
<b>Operating Position</b>	Vertical/Retractable
<b>Start Time</b>	Instant
<b>Driver</b>	IK-PA30B-420050-W-A
<b>Optics</b>	Aluminum Reflector
<b>Dimming</b>	0-10 V
<b>Dimensions</b>	6 inch : Dia 7.8" x H 5" 8 inch : Dia 9.2" x H 6.2"

Size (inch)	Power (W)	CCT (K)	Total Lumen Output (lm)	Beam Spread (Options)	Finish
6"	60	4000	7800	36°	White
8"	60	4000	7800	36°	White

### › Model/Colors

Available In White.

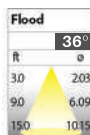


### › Application Areas

Downlight for Indoor Applications.



### › Beam Spread (options)



- Note:**
1. LED Driver- IKIO uses own manufactured LED driver with toughest design and high surge & voltage withstanding capabilities.
  2. Product available in other Kelvin temperatures on request.
  3. Wattages & beam spreads can be customized as per the requirement.

# Elio

## Downlight

Elio downlight is a round shaped LED downlight made of aluminum die cast with high quality powder coated luminaire housing and optimum heat sink. Available in multiple wattages, color temperatures, and beam angles, this luminaire offers greater flexibility in its application. Having highlighting features like a specular reflector, power grid /global connectors, and an isolated LED driver with ultra bright OSRAM COB, it delivers exceptional illumination across the space.



### > Technical Parameters

<b>Voltage</b>	100 - 277 V AC, 50-60 Hz
<b>Light Source</b>	Osram SOLERIQ S 19
<b>Operating Position</b>	Swiveling Type
<b>Start Time</b>	Instant
<b>Driver</b>	Stand Alone (Included)
<b>Optics</b>	Darklight Technology Black, Silver
<b>Dimming</b>	On-Off / Triac / 0-10 V

CRI	Power (W)	CCT (K)	Total Lumen Output (lm)	Finish
>90	12 / 20 / 30 / 35	3000	1520 / 2530 / 3800 / 4430	Black / White
>90	12 / 20 / 30 / 35	4000	1600 / 2660 / 4000 / 4660	Black / White
>90	12 / 20 / 30 / 35	5000	1680 / 2800 / 4200 / 4900	Black / White

### > Model/Colors

Available in Black and White.



### > Application Areas

Downlight for Indoor Applications.  
Guest Room, Corridor, Restaurant,  
Meeting Room, Club, Hall, Hotel Entrance



### > Technical Drawing



### > Beam Spread (Options)

Spot	15°		24°		38°		60°	
	ft	ft	ft	ft	ft	ft	ft	ft
3.0	0.72	3.0	1.41	3.0	2.09	3.0	3.15	
9.0	2.15	9.0	4.22	9.0	6.09	9.0	9.45	
15.0	3.58	15.0	7.04	15.0	10.15	15.0	15.75	

**Note:** Product available in other Kelvin temperatures on request.

# Gleam

## Downlight

Gleam, a square shaped LED downlight, is made of aluminum die cast with high quality powder coated luminaire housing and optimum heat sink that ensure high-durability. The specular darklight reflector in this store light allows outstanding visual comfort to the visitors so that they are able to explore the merchandise with ease.



### > Technical Parameters

<b>Voltage</b>	100 - 277 V AC, 50-60 Hz
<b>Light Source</b>	Osram SOLERIQ S 19
<b>Operating Position</b>	Swiveling Type
<b>Start Time</b>	Instant
<b>Driver</b>	Stand Alone (Included)
<b>Optics</b>	Darklight Technology Black, Silver
<b>Dimming</b>	On-Off / Triac / 0-10 V

CRI	Power (W)	CCT (K)	Total Lumen Output (lm)	Finish
>90	12 / 20 / 30 / 35	3000	1520 / 2530 / 3800 / 4430	Black / White
>90	12 / 20 / 30 / 35	4000	1600 / 2660 / 4000 / 4660	Black / White
>90	12 / 20 / 30 / 35	5000	1680 / 2800 / 4200 / 4900	Black / White

### > Model/Colors

Available in Black and White.



### > Application Areas

Downlight for Indoor Applications.  
Guest Room, Corridor, Restaurant,  
Meeting Room, Club, Hall, Hotel Entrance



### > Technical Drawing



### > Beam Spread (Options)

Spot	Medium	Flood	Wide Flood
15°	24°	38°	60°
ft	ft	ft	ft
3.0	3.0	3.0	3.0
0.72	1.41	2.03	3.15
9.0	2.15	6.09	9.45
15.0	3.58	10.15	15.75

**Note:** Product available in other Kelvin temperatures on request.

# Spiro

## Downlight

Spiro, a circular shaped LED downlight is made of aluminum die cast with high quality powder coated luminaire housing and optimum heat sink that ensure high-durability. The specular darklight reflector in this store light allows outstanding visual comfort to the visitors so that they are able to explore the merchandise with ease.



### › Technical Parameters

<b>Voltage</b>	100 - 277 V AC, 50-60 Hz
<b>Light Source</b>	Osram SOLERIQ S 19
<b>Operating Position</b>	Non-Swiveling Type
<b>Start Time</b>	Instant
<b>Driver</b>	Stand Alone (Included)
<b>Optics</b>	Darklight Technology Black, Silver
<b>Dimming</b>	On-Off / Triac / 0-10 V

CRI	Power (W)	CCT (K)	Total Lumen Output (lm)	Finish
>90	8 / 12 / 15 / 20 / 25 / 30 / 35	3000	1010 / 1520 / 1900 / 2530 / 3160 / 3800 / 4430	Black / White
>90	8 / 12 / 15 / 20 / 25 / 30 / 35	4000	1060 / 1600 / 2000 / 2660 / 3325 / 4000 / 4660	Black / White
>90	8 / 12 / 15 / 20 / 25 / 30 / 35	5000	1120 / 1680 / 2100 / 2800 / 3500 / 4200 / 4900	Black / White

### › Model/Colors

Available in Black and White.

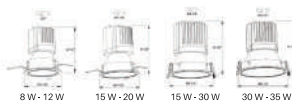


### › Application Areas

Downlight for Indoor Applications.  
Guest Room, Corridor, Restaurant,  
Meeting Room, Club, Hall, Hotel Entrance



### › Technical Drawing



### › Beam Spread (Options)

Spot		Medium		Flood	
15°		24°		38°	
ft	ø	ft	ø	ft	ø
3.0	0.72	3.0	1.41	3.0	2.03
9.0	2.15	9.0	4.22	9.0	6.09
15.0	3.58	15.0	7.04	15.0	10.15

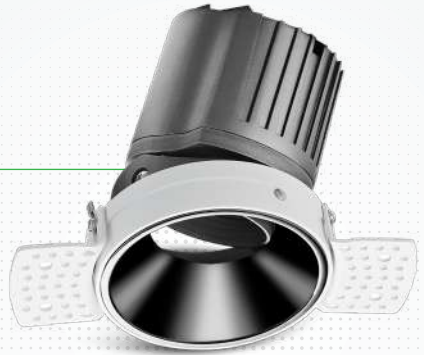
**Note:** Product available in other Kelvin temperatures on request.



# Lumos

## Downlight

Circular in design, this LED downlight is made of aluminum die cast with high quality powder coated luminaire housing and optimum heat sink. Available in multiple wattages and beam angles, the luminaire renders greater flexibility in its application for store lighting. Moreover, the specular darklight reflector in this store light allows outstanding visual comfort to the visitors.



### › Technical Parameters

<b>Voltage</b>	100 - 277 V AC, 50-60 Hz
<b>Light Source</b>	Osram SOLERIQ S 19
<b>Operating Position</b>	Non-Swiveling Type
<b>Start Time</b>	Instant
<b>Driver</b>	Stand Alone (Included)
<b>Optics</b>	Darklight Technology Black, Silver
<b>Dimming</b>	On-Off / Triac / 0-10 V

CRI	Power (W)	CCT (K)	Total Lumen Output (lm)	Finish
>90	8 / 12 / 15 / 20	3000	1010 / 1520 / 1900 / 2530	Black / White
>90	8 / 12 / 15 / 20	4000	1060 / 1600 / 2000 / 2660	Black / White
>90	8 / 12 / 15 / 20	5000	1120 / 1680 / 2100 / 2800	Black / White

### › Model/Colors

Available in Black and White.

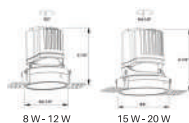


### › Application Areas

Downlight for Indoor Applications.  
Guest Room, Corridor, Restaurant,  
Meeting Room, Club, Hall, Hotel Entrance



### › Technical Drawing



### › Beam Spread (Options)

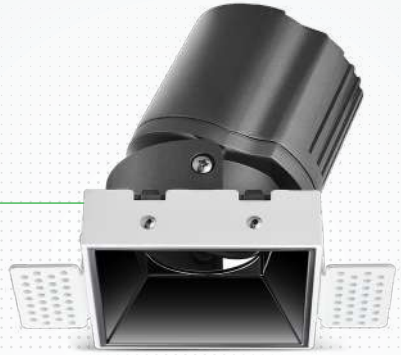
Spot		Medium		Flood		Wide Flood	
15°		24°		38°		60°	
ft	ø	ft	ø	ft	ø	ft	ø
3.0	0.72	3.0	1.41	3.0	2.03	3.0	3.15
9.0	2.15	9.0	4.22	9.0	6.09	9.0	9.45
15.0	3.58	15.0	7.04	15.0	10.15	15.0	15.75

**Note:** Product available in other Kelvin temperatures on request.

# Theia

## Downlight

Theia, a square LED downlight, is made of aluminum die cast with high quality powder coated luminaire housing and optimum heat sink. Specular reflector & power grid /global connectors available with isolated LED Driver using Ultra bright OSRAM COB.



### › Technical Parameters

<b>Voltage</b>	100 - 277 V AC, 50-60 Hz
<b>Light Source</b>	Osram SOLERIQ S 19
<b>Operating Position</b>	Non-Swiveling Type
<b>Start Time</b>	Instant
<b>Driver</b>	Stand Alone (Included)
<b>Optics</b>	Darklight Technology Black, Silver
<b>Dimming</b>	On-Off / Triac / 0-10 V

CRI	Power (W)	CCT (K)	Total Lumen Output (lm)	Finish
>90	8 / 12 / 15 / 20	3000	1010 / 1520 / 1900 / 2530	Black / White
>90	8 / 12 / 15 / 20	4000	1060 / 1600 / 2000 / 2660	Black / White
>90	8 / 12 / 15 / 20	5000	1120 / 1680 / 2100 / 2800	Black / White

### › Model/Colors

Available in Black and White.

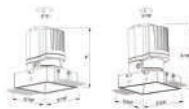


### › Application Areas

Downlight for Indoor Applications.  
Guest Room, Corridor, Restaurant,  
Meeting Room, Club, Hall, Hotel Entrance



### › Technical Drawing



8 W - 12 W

15 W - 20 W

### › Beam Spread (Options)

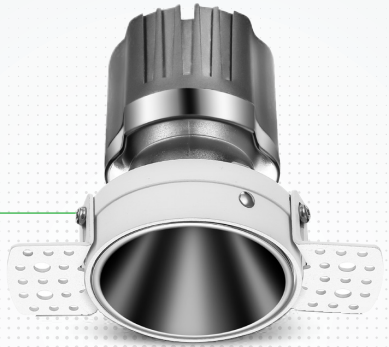
Spot		Medium		Flood		Wide Flood	
15°		24°		38°		60°	
ft	ø	ft	ø	ft	ø	ft	ø
3.0	0.72	3.0	1.41	3.0	2.03	3.0	3.15
9.0	2.15	9.0	4.22	9.0	6.09	9.0	9.45
15.0	3.58	15.0	7.04	15.0	10.15	15.0	15.75

**Note:** Product available in other Kelvin temperatures on request.

# Olivio

## Downlight

Olivio is a round LED downlight made of aluminum die cast with high quality powder coated luminaire housing and optimum heat sink. Specular reflector & power grid /global connectors available with isolated LED driver using ultra bright OSRAM COB.



### › Technical Parameters

<b>Voltage</b>	100 - 277 V AC, 50-60 Hz
<b>Light Source</b>	Osram SOLERIQ S 19
<b>Operating Position</b>	Non-Swiveling Type
<b>Start Time</b>	Instant
<b>Driver</b>	Stand Alone (Included)
<b>Optics</b>	Darklight Technology Black, Silver
<b>Dimming</b>	On-Off / Triac / 0-10 V

CRI	Power (W)	CCT (K)	Total Lumen Output (lm)	Finish
>90	8 / 12 / 15 / 20	3000	1010 / 1520 / 1900 / 2530	Black / White
>90	8 / 12 / 15 / 20	4000	1060 / 1600 / 2000 / 2660	Black / White
>90	8 / 12 / 15 / 20	5000	1120 / 1680 / 2100 / 2800	Black / White

### › Model/Colors

Available in Black and White.

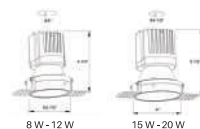


### › Application Areas

Downlight for Indoor Applications.  
Guest Room, Corridor, Restaurant,  
Meeting Room, Club, Hall, Hotel Entrance



### › Technical Drawing



### › Beam Spread (Options)

Spot	15°	Medium	24°	Flood	38°	Wide Flood	60°
ft	ø	ft	ø	ft	ø	ft	ø
3.0	0.72	3.0	1.41	3.0	2.03	3.0	3.15
9.0	2.15	9.0	4.22	9.0	6.09	9.0	9.45
15.0	3.58	15.0	7.04	15.0	10.15	15.0	15.75

**Note:** Product available in other Kelvin temperatures on request.

# Glint

## Downlight

Glint, a circular shaped LED downlight, is made of aluminum die cast with high quality powder coated luminaire housing and optimum heat sink. Specular reflector & power grid /global connectors available with isolated LED Driver using Ultra bright OSRAM COB.



### › Technical Parameters

<b>Voltage</b>	100 - 277 V AC, 50-60 Hz
<b>Light Source</b>	Osram SOLERIQ S 19
<b>Operating Position</b>	Swiveling Type
<b>Start Time</b>	Instant
<b>Driver</b>	Stand Alone (Included)
<b>Optics</b>	Darklight Technology Black, Silver
<b>Dimming</b>	On-Off / Triac / 0-10 V

CRI	Power (W)	CCT (K)	Total Lumen Output (lm)	Finish
>90	8 / 15 / 20 / 30 / 40 / 50 / 55	3000	1010 / 1895 / 2527 / 3790 / 5054 / 6318 / 6950	White
>90	8 / 15 / 20 / 30 / 40 / 50 / 55	4000	1060 / 2000 / 2660 / 3990 / 5320 / 6650 / 7310	White
>90	8 / 15 / 20 / 30 / 40 / 50 / 55	5000	1120 / 2100 / 2800 / 4200 / 5600 / 7000 / 7700	White

### › Model/Colors

Available in White.

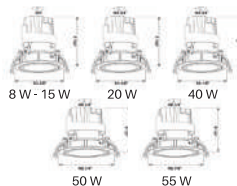


### › Application Areas

Downlight for Indoor Applications.  
Guest Room, Corridor, Restaurant,  
Meeting Room, Club, Hall, Hotel Entrance



### › Technical Drawing



### › Beam Spread (Options)

Spot	15°		Medium	24°		Flood	38°	
	ft	ø		ft	ø		ft	ø
3.0	0.72	3.0	1.41	3.0	2.03	15.0	3.58	
9.0	2.15	9.0	4.22	9.0	6.09	15.0	10.15	
15.0	3.58	15.0	7.04	15.0	10.15			

**Note:** 1. Product available in other Kelvin temperatures on request.  
2. Reflector Colour- Black, White, Silver, Golden available.

# Ocul

## Downlight

Ocul, a round shaped LED downlight, is made of aluminum die cast with high quality powder coated luminaire housing and optimum heat sink. Specular reflector & power grid / global connectors available with isolated LED Driver using Ultra bright OSRAM COB.



### › Technical Parameters

<b>Voltage</b>	100 - 277 V AC, 50-60 Hz
<b>Light Source</b>	Osram SOLERIQ S 19
<b>Operating Position</b>	Non - Swiveling Type
<b>Start Time</b>	Instant
<b>Driver</b>	Stand Alone (Included)
<b>Optics</b>	Darklight Technology Black, Silver
<b>Dimming</b>	On-Off / Triac / 0-10 V

CRI	Power (W)	CCT (K)	Total Lumen Output (lm)	Finish
>90	10 / 15 / 20 / 30 / 40 / 50	2700	1200 / 1800 / 2400 / 3600 / 4800 / 6000	White
>90	10 / 15 / 20 / 30 / 40 / 50	3000	1264 / 1895 / 2527 / 3790 / 5054 / 6318	White
>90	10 / 15 / 20 / 30 / 40 / 50	4000	1330 / 2000 / 2660 / 3990 / 5320 / 6650	White
>90	10 / 15 / 20 / 30 / 40 / 50	5000	1400 / 2100 / 2800 / 4200 / 5600 / 7000	White

### › Model/Colors

Available in White.

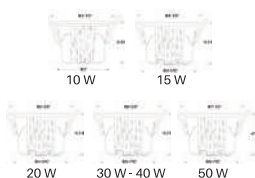


### › Application Areas

Downlight for Indoor Applications.  
Classroom, Meeting Room,  
Office, Club, Home.



### › Technical Drawing



### › Beam Spread (Options)

Spot	15°	Medium	24°	Flood	36°	Wide Flood	60°
ft	0.72	3.0	1.41	3.0	2.03	3.0	3.15
90	2.15	9.0	4.22	9.0	6.09	9.0	9.45
15.0	3.58	15.0	7.04	15.0	10.15	15.0	15.75

**Note:** 1. Product available in other Kelvin temperatures on request.

2. Reflector Colour- Black, White, Silver, Golden available. 3. SMD can improve lumen efficiency to 120-130 lm/W by adding extra cost.

# Nova

## Downlight

Nova, a round shaped LED downlight, is made of aluminum die cast with high quality powder coated luminaire housing and optimum heat sink. The specular darklight reflector in this store light allows outstanding visual comfort to the visitors so that they are able to explore the merchandise at ease.



### > Technical Parameters

<b>Voltage</b>	100 - 277 V AC, 50-60 Hz
<b>Light Source</b>	Osram SOLERIQ S 19
<b>Operating Position</b>	Swiveling Type, 360D
<b>Start Time</b>	Instant
<b>Driver</b>	Stand Alone (Included)
<b>Optics</b>	Darklight Technology Black, Silver
<b>Dimming</b>	On-Off / Triac / 0-10 V

CRI	Power (W)	CCT (K)	Total Lumen Output (lm)	Finish
>90	12 / 20 / 30	2700	1440 / 2400 / 3600	White
>90	12 / 20 / 30	3000	1520 / 2530 / 3800	White
>90	12 / 20 / 30	4000	1600 / 2660 / 4000	White
>90	12 / 20 / 30	5000	1680 / 2800 / 4200	White

### > Model/Colors

Available in White.

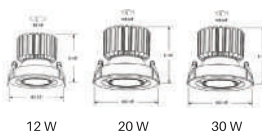


### > Application Areas

Downlight for Indoor Applications.  
Guest Room, Corridor, Restaurant,  
Meeting Room, Club, Hall, Hotel Entrance



### > Technical Drawing



### > Beam Spread (Options)

Spot	12°	Medium	24°	Flood	36°
ft	0	0	0	0	0
3.0	0.72	3.0	1.41	3.0	2.03
9.0	2.15	9.0	4.22	9.0	6.09
15.0	3.58	15.0	7.04	15.0	10.15

**Note:** 1. Product available in other Kelvin temperatures on request.

2. Black/White inner ring -IP44 type available, at added extra cost. 3. 30 W have Energy star type option, at added extra cost.

# Scint

## Downlight

Square in design, Scint LED downlight is made of aluminum die cast with high quality powder coated luminaire housing and optimum heat sink. Available in multiple wattages and beam angles, the luminaire renders greater flexibility in its application for store lighting. Moreover, the specular darklight reflector in this store light allows outstanding visual comfort to the visitors.



### › Technical Parameters

<b>Voltage</b>	100 - 277 V AC, 50-60 Hz
<b>Light Source</b>	Osram SOLERIQ S 19
<b>Operating Position</b>	Swiveling Type, 360D
<b>Start Time</b>	Instant
<b>Driver</b>	Stand Alone (Included)
<b>Optics</b>	Darklight Technology Black, Silver
<b>Dimming</b>	On-Off / Triac / 0-10 V

CRI	Power (W)	CCT (K)	Total Lumen Output (lm)	Finish
>90	12 / 20 / 30	2700	1440 / 2400 / 3600	White
>90	12 / 20 / 30	3000	1516 / 2520 / 3790	White
>90	12 / 20 / 30	4000	1600 / 2660 / 4000	White
>90	12 / 20 / 30	5000	1680 / 2800 / 4200	White

### › Model/Colors

Available in White.

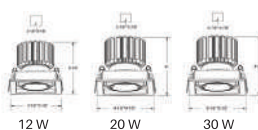


### › Application Areas

Downlight for Indoor Applications.  
Guest Room, Corridor, Restaurant,  
Meeting Room, Club, Hall, Hotel Entrance



### › Technical Drawing



### › Beam Spread (Options)

Spot	15°	Medium	24°	Flood	38°
ft	0	ft	0	ft	0
3.0	0.72	3.0	1.41	3.0	2.03
9.0	2.15	9.0	4.22	9.0	6.09
15.0	3.58	15.0	7.04	15.0	10.15

**Note:** Product available in other Kelvin temperatures on request.

# Odin

## Downlight

Create the desired lighting effect in your stores with IKIO's Odin, a twin square LED downlight made of aluminum die cast with high quality powder coated luminaire housing and optimum heat sink. These properties of the luminaire contribute to its effective functioning for a longer time period. Moreover, available in multiple wattages, color temperatures, finishes, and beam angles, this luminaire offers greater flexibility in its application.



### Technical Parameters

<b>Voltage</b>	100 - 277 V AC, 50-60 Hz
<b>Light Source</b>	Osram SOLERIQ S 19
<b>Operating Position</b>	Swiveling Type, 360D
<b>Start Time</b>	Instant
<b>Driver</b>	Stand Alone (Included)
<b>Optics</b>	Darklight Technology Black, Silver
<b>Dimming</b>	On-Off / Triac / 0-10 V

CRI	Power (W)	CCT (K)	Total Lumen Output (lm)	Finish
>90	24 / 40 / 60	2700	2880 / 4800 / 7200	White
>90	24 / 40 / 60	3000	3030 / 5050 / 7580	White
>90	24 / 40 / 60	4000	3190 / 5320 / 7980	White
>90	24 / 40 / 60	5000	3360 / 5600 / 8400	White

### Model/Colors

Available in White.

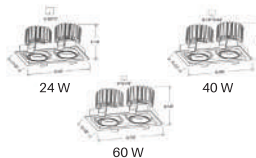


### Application Areas

Downlight for Indoor Applications.  
Guest Room, Corridor, Restaurant,  
Meeting Room, Club, Hall, Hotel Entrance



### Technical Drawing



### Beam Spread (Options)

Spot	Medium	Flood
15°	24°	36°
ft	ft	ft
3.0	0.72	3.0
9.0	2.15	9.0
15.0	3.58	15.0
	1.41	2.03
	4.22	6.09
	7.04	10.15

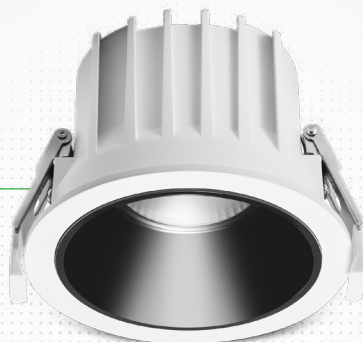
**Note:** Product available in other Kelvin temperatures on request.



# Stella

## Downlight

Stella, a round LED downlight, is made of aluminum die cast with high quality powder coated luminaire housing and optimum heat sink. Specular reflector & power grid / global connectors available with isolated LED driver using ultra bright OSRAM COB.



### > Technical Parameters

<b>Voltage</b>	100 - 277 V AC, 50-60 Hz
<b>Light Source</b>	Osram SOLERIQ S 19
<b>Operating Position</b>	Non - Swiveling Type
<b>Start Time</b>	Instant
<b>Driver</b>	Stand Alone (I ncluded)
<b>Optics</b>	Darklight Technology Black, Silver
<b>Dimming</b>	On-Off / Triac / 0-10 V

CRI	Power (W)	CCT (K)	Total Lumen Output (lm)	Finish
>90	12 / 15 / 20 / 30 / 40 / 50 / 55	2700	1440 / 1800 / 2400 / 3600 / 4800 / 6000 / 6600	White
>90	12 / 15 / 20 / 30 / 40 / 50 / 55	3000	1516 / 1895 / 2527 / 3790 / 5054 / 6318 / 6950	White
>90	12 / 15 / 20 / 30 / 40 / 50 / 55	4000	1596 / 2000 / 2660 / 3990 / 5320 / 6650 / 7310	White
>90	12 / 15 / 20 / 30 / 40 / 50 / 55	5000	1680 / 2100 / 2800 / 4200 / 5600 / 7000 / 7700	White

### > Model/Colors

Available in White.

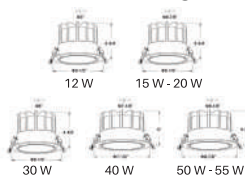


### > Application Areas

Downlight for Indoor Applications.  
Guest Room, Corridor, Restaurant,  
Meeting Room, Club, Hall.



### > Technical Drawing



### > Beam Spread (Options)

Spot	15°	Medium	24°	Flood	36°	Wide Flood	60°
ft	0.72	1.41	2.03	3.15	6.09	9.45	15.75
ft	3.0	3.0	3.0	3.0	3.0	3.0	3.0
90	2.15	4.22	6.09	9.45	15.75	15.75	15.75
150	3.58	7.04	10.15	15.75	15.75	15.75	15.75

**Note:** 1. Product available in other Kelvin temperatures on request.  
2. Reflector Color: Black/Silver/White available.

# Glim

## Downlight

Glim, a round shaped LED downlight, is made of aluminum die cast with high quality powder coated luminaire housing and optimum heat sink. Specular reflector & power grid / global connectors available with isolated LED driver using ultra bright OSRAM COB.



### > Technical Parameters

<b>Voltage</b>	100 - 277 V AC, 50-60 Hz
<b>Light source</b>	Osram SOLERIQ S 19
<b>Operating Position</b>	Non - Swiveling Type
<b>Start time</b>	Instant
<b>Driver</b>	Stand Alone (Included)
<b>Optics</b>	Darklight Technology Black, Silver
<b>Dimming</b>	On-Off / Triac / 0-10 V

CRI	Power (W)	CCT (K)	Total Lumen Output (lm)	Finish
>90	12 / 15 / 20 / 30 / 40	2700	1440 / 1800 / 2400 / 3600 / 4800	Black / White
>90	12 / 15 / 20 / 30 / 40	3000	1520 / 1900 / 2530 / 3790 / 5050	Black / White
>90	12 / 15 / 20 / 30 / 40	4000	1600 / 2000 / 2660 / 4000 / 5320	Black / White
>90	12 / 15 / 20 / 30 / 40	5000	1680 / 2100 / 2800 / 4200 / 5600	Black / White

### > Model/Colors

Available in Black and White.



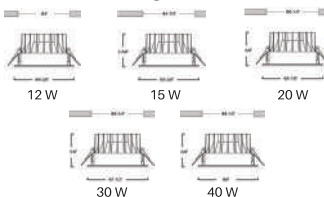
### > Application Areas

Downlight for Indoor Applications.  
Outdoor Corridor, Bathroom, Eave.

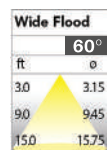


**Note:** Product available in other Kelvin temperatures on request.

### > Technical Drawing



### > Beam Spread (Options)



# Flare

## Downlight

Flare downlight is a square shaped fixture that illuminates a store in the most effective manner without being obtrusive. The smart engineering of the luminaire with specular reflector & power grid/ global connectors, along with high voltage standing in-house LED driver, makes it an ideal choice for lighting your stores.



### > Technical Parameters

<b>Voltage</b>	100 - 277 V AC, 50-60 Hz
<b>Light Source</b>	Osram SOLERIQ S 19
<b>Operating Position</b>	Non - Swiveling Type
<b>Start Time</b>	Instant
<b>Driver</b>	Stand Alone (Included)
<b>Optics</b>	Darklight Technology Black, Silver
<b>Dimming</b>	On-Off / Triac / 0-10 V

CRI	Power (W)	CCT (K)	Total Lumen Output (lm)	Finish
>90	12 / 15 / 20 / 30 / 40	2700	1440 / 1800 / 2400 / 3600 / 4800	White / Black
>90	12 / 15 / 20 / 30 / 40	3000	1520 / 1900 / 2530 / 3800 / 5060	White / Black
>90	12 / 15 / 20 / 30 / 40	4000	1600 / 2000 / 2660 / 4000 / 5320	White / Black
>90	12 / 15 / 20 / 30 / 40	5000	1680 / 2100 / 2800 / 4200 / 5600	White / Black

### > Model/Colors

Available in Black and White.

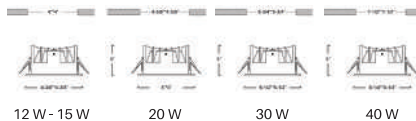


### > Application Areas

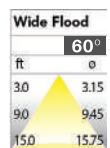
Downlight for Indoor Applications.  
Outdoor Corridor, Bathroom, Eave.



### > Technical Drawing



### > Beam Spread (Options)



**Note:** Product available in other Kelvin temperatures on request.

# Lumin

## Downlight

Lumin, a round shaped LED downlight, is made of aluminum die cast with high quality powder coated luminaire housing and optimum heat sink. Specular reflector & power grid /global connectors available with isolated LED driver using ultra bright OSRAM COB.



### › Technical Parameters

<b>Voltage</b>	100 - 277 V AC, 50-60 Hz
<b>Light Source</b>	Osram SOLERIQ S 19
<b>Operating Position</b>	Non - Swiveling Type
<b>Start Time</b>	Instant
<b>Driver</b>	Stand Alone (Included)
<b>Optics</b>	Darklight Technology Black, Silver
<b>Dimming</b>	On-Off / Triac / 0-10 V

CRI	Power (W)	CCT (K)	Total Lumen Output (lm)	Finish
>90	12 / 20 / 30 / 40 / 50	2700	1440 / 2400 / 3600 / 4800 / 6000	Black / White
>90	12 / 20 / 30 / 40 / 50	3000	1516 / 2520 / 3790 / 5050 / 6300	Black / White
>90	12 / 20 / 30 / 40 / 50	4000	1600 / 2660 / 4000 / 5320 / 6650	Black / White
>90	12 / 20 / 30 / 40 / 50	5000	1680 / 2800 / 4200 / 5600 / 7000	Black / White

### › Model/Colors

Available in Black and White.



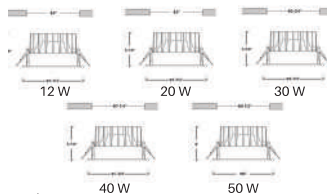
### › Application Areas

Downlight for Indoor Applications.  
Guest Room, Corridor, Restaurant, Meeting Room, Club, Hall, Hotel Entrance

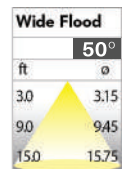


**Note:** Product available in other Kelvin temperatures on request.

### › Technical Drawing



### › Beam Spread (Options)



# Aspro

## Downlight

Aspro, a square LED downlight, is made of aluminum die cast with high quality powder coated luminaire housing and optimum heat sink. Specular reflector & power grid /global connectors available with isolated LED driver using ultra bright OSRAM COB. Moreover, the specular darklight reflector in this store light allows outstanding visual comfort to the visitors.



### › Technical Parameters

<b>Voltage</b>	100 - 277 V AC, 50-60 Hz
<b>Light Source</b>	Osram SOLERIQ S 19
<b>Operating Position</b>	Non - Swiveling Type
<b>Start Time</b>	Instant
<b>Driver</b>	Stand Alone (Included)
<b>Optics</b>	Darklight Technology Black, Silver
<b>Dimming</b>	On-Off / Triac / 0-10 V

CRI	Power (W)	CCT (K)	Total Lumen Output (lm)	Finish
>90	12 / 20 / 30 / 40 / 50	2700	1440 / 2400 / 3600 / 4800 / 6000	White / Black
>90	12 / 20 / 30 / 40 / 50	3000	1516 / 2520 / 3790 / 5050 / 6300	White / Black
>90	12 / 20 / 30 / 40 / 50	4000	1600 / 2660 / 4000 / 5320 / 6650	White / Black
>90	12 / 20 / 30 / 40 / 50	5000	1680 / 2800 / 4200 / 5600 / 7000	White / Black

### › Model/Colors

Available in Black and White.

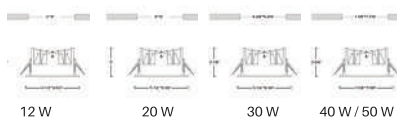


### › Application Areas

Downlight for Indoor Applications.  
Guest Room, Corridor, Restaurant,  
Meeting Room, Club, Hall, Hotel Entrance.



### › Technical Drawing



### › Beam Spread (Options)

Wide Flood		50°
ft		0
3.0		3.15
9.0		9.45
15.0		15.75

**Note:** Product available in other Kelvin temperatures on request.

# Orim

## Downlight

Orim is a round shaped LED downlight, an ideal replacement for conventional store lights, ensures high energy savings and quality lighting in stores. Specular reflector & power grid / global connectors available with isolated LED driver using ultra bright OSRAM COB. Moreover, the specular darklight reflector in this store light allows outstanding visual comfort to the visitors.



### ► Technical Parameters

<b>Voltage</b>	100 - 277 V AC, 50-60 Hz
<b>Light Source</b>	Osram SOLERIQ S 19
<b>Operating Position</b>	Non - Swiveling Type
<b>Start Time</b>	Instant
<b>Driver</b>	Stand Alone (Included)
<b>Optics</b>	Darklight Technology Black, Silver
<b>Dimming</b>	On-Off / Triac / 0-10 V

CRI	Power (W)	CCT (K)	Total Lumen Output (lm)	Finish
>90	12 / 15 / 20 / 30 / 40 / 50 / 55	2700	1440 / 1800 / 2400 / 3600 / 4800 / 6000 / 6600	White
>90	12 / 15 / 20 / 30 / 40 / 50 / 55	3000	1516 / 1895 / 2527 / 3790 / 5054 / 6318 / 6950	White
>90	12 / 15 / 20 / 30 / 40 / 50 / 55	4000	1596 / 2000 / 2660 / 3990 / 5320 / 6650 / 7310	White
>90	12 / 15 / 20 / 30 / 40 / 50 / 55	5000	1680 / 2100 / 2800 / 4200 / 5600 / 7000 / 7700	White

### ► Model/Colors

Available in White.

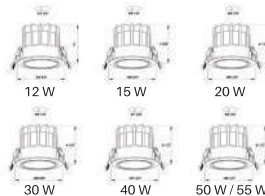


### ► Application Areas

Downlight for Indoor Applications.  
Guest Room, Corridor, Restaurant,  
Meeting Room Club, Hall, Hotel  
Entrance.



### ► Technical Drawing



### ► Beam Spread (Options)

Spot		Medium		Flood	
15°		30°		45°	
ft	ø	ft	ø	ft	ø
3.0	0.72	3.0	1.41	3.0	2.03
9.0	2.15	9.0	4.22	9.0	6.09
15.0	3.58	15.0	7.04	15.0	10.15

**Note:** 1. Product available in other Kelvin temperatures on request.  
2. Reflector: Black/White option available.

# Avant

## Downlight

Avant, a round shaped LED downlight made of aluminum die cast with high quality powder coated luminaire housing and optimum heat sink. Specular reflector & power grid/global connectors available with isolated LED driver using ultra bright OSRAM COB.



### > Technical Parameters

<b>Voltage</b>	100 - 277 V AC, 50-60 Hz
<b>Light Source</b>	Osram SOLERIQ S 19
<b>Operating Position</b>	Swiveling Type
<b>Start Time</b>	Instant
<b>Driver</b>	Stand Alone (Included)
<b>Dimming</b>	On-Off / Triac / 0-10 V

CRI	Power (W)	CCT (K)	Total Lumen Output (lm)	Finish
>90	8 / 15 / 25	2700	960 / 1800 / 3000	Black / White
>90	8 / 15 / 25	3000	1010 / 1900 / 3160	Black / White
>90	8 / 15 / 25	4000	1070 / 2000 / 3325	Black / White
>90	8 / 15 / 25	5000	1120 / 2100 / 3500	Black / White

### > Model/Colors

Available in White & Black.



### > Application Areas

Downlight for Indoor Applications.  
Stores, Corridor, Restaurant, Club.



### > Technical Drawing



8 W

15 W

25 W

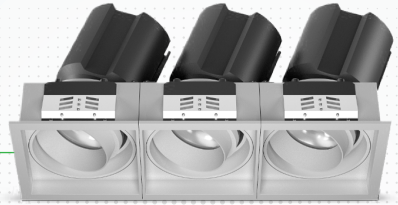
### > Beam Spread (Options)

Spot		Medium		Flood	
15°		24°		36°	
ft	ø	ft	ø	ft	ø
3.0	0.72	3.0	1.41	3.0	2.03
9.0	2.15	9.0	4.22	9.0	6.09
15.0	3.58	15.0	7.04	15.0	10.15

**Note:** 1. Product available in other Kelvin temperatures on request.  
2. Reflector: Black/White option available.

# Triad

## Downlight



Triad, a square LED downlight made of aluminum die cast with high quality powder coated luminaire housing and optimum heat sink. Specular reflector & power grid /global connectors available with isolated LED driver using ultra bright OSRAM COB.

### > Technical Parameters

<b>Voltage</b>	100 - 277 V AC, 50-60 Hz
<b>Light Source</b>	Osram SOLERIQ S 19
<b>Operating Position</b>	Swiveling Type
<b>Start Time</b>	Instant
<b>Driver</b>	Stand Alone (Included)
<b>Dimming</b>	On-Off / Triac / 0-10 V

CRI	Power (W)	CCT (K)	Total Lumen Output (lm)	Finish
>90	30	2700	3600	Black / White
>90	30	3000	3800	Black / White
>90	30	4000	4000	Black / White
>90	30	5000	4200	Black / White

### > Model/Colors

Available in White & Black.

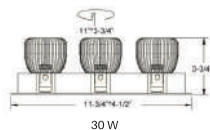


### > Application Areas

Downlight for Indoor Applications. Stores, Corridor, Restaurant, Club.



### > Technical Drawing



### > Beam Spread (Options)

Spot 15°		Medium 24°		Flood 36°		Wide Flood 60°	
ft	ø	ft	ø	ft	ø	ft	ø
3.0	0.72	3.0	1.41	3.0	2.03	3.0	3.15
9.0	2.15	9.0	4.22	9.0	6.09	9.0	9.45
15.0	3.58	15.0	7.04	15.0	10.15	15.0	15.75

**Note:** Product available in other Kelvin temperatures on request.



# Pistone

## Downlight



Pistone, a cylindrical shaped LED surface downlight, is made of aluminum die cast with high quality powder coated luminaire housing and optimum heat sink. Specular reflector & powergrid / global connectors available with isolated LED driver using ultra bright OSRAM COB.

### › Technical Parameters

<b>Voltage</b>	100 - 277 V AC, 50-60 Hz
<b>Light Source</b>	Osram SOLERIQ S 19
<b>Operating Position</b>	Non - Swiveling Type
<b>Start Time</b>	Instant
<b>Driver</b>	Stand Alone (Included)
<b>Optics</b>	Reflective Cup Structure
<b>Beam Spread</b>	Spot, Medium, Flood
<b>Dimming</b>	Triac Dimming / 0-10 V Dimming

CRI	Power (W)	CCT (K)	Total Lumen Output (lm)	Finish
>90	12 / 15 / 20 / 25 / 30 / 40 / 50 / 55	2700	1440 / 1800 / 2400 / 3000 / 3600 / 4800 / 6000 / 6600	Black / White
>90	12 / 15 / 20 / 25 / 30 / 40 / 50 / 55	3000	1516 / 1895 / 2527 / 3160 / 3790 / 5054 / 6318 / 6950	Black / White
>90	12 / 15 / 20 / 25 / 30 / 40 / 50 / 55	4000	1596 / 2000 / 2660 / 3325 / 3990 / 5320 / 6650 / 7310	Black / White
>90	12 / 15 / 20 / 25 / 30 / 40 / 50 / 55	5000	1680 / 2100 / 2800 / 3500 / 4200 / 5600 / 7000 / 7700	Black / White

### › Model/Colors

Available in White & Black.



### › Application Areas

Downlight for Indoor Applications, Guest Room, Restaurant, Meeting Room, Club, Hall, Hotel Entrance.



### › Technical Drawing



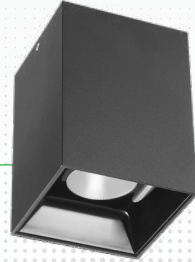
### › Beam Spread (Options)

Spot		Medium		Flood	
15°		30°		45°	
ft	ø	ft	ø	ft	ø
3.0	0.72	3.0	1.41	3.0	2.03
9.0	2.15	9.0	4.22	9.0	6.09
15.0	3.58	15.0	7.04	15.0	10.15

**Note:** Product available in other Kelvin temperatures on request.

# Cubra

## Downlight



Cubra is a square shaped LED surface downlight made of aluminum die cast with high quality powder coated luminaire housing and optimum heat sink. Specular reflector & power grid /global connectors available with isolated LED driver using ultra bright OSRAM COB.30.

### › Technical Parameters

<b>Voltage</b>	100 - 277 V AC, 50-60 Hz
<b>Light Source</b>	Osram SOLERIQ.S 19
<b>Operating Position</b>	Non - Swiveling Type
<b>Start Time</b>	Instant
<b>Driver</b>	Stand Alone (Included)
<b>Optics</b>	Reflective Cup Structure
<b>Beam Spread</b>	Spot, Medium, Flood
<b>Dimming</b>	Triac Dimming / 0-10 V Dimming

CRI	Power (W)	CCT (K)	Total Lumen Output (lm)	Finish
>90	20 / 30	2700	2400 / 3600	Black / White
>90	20 / 30	3000	2530 / 3800	Black / White
>90	20 / 30	4000	2660 / 4000	Black / White
>90	20 / 30	5000	2800 / 4200	Black / White

### › Model/Colors

Available in White & Black.



### › Application Areas

Downlight for Indoor Applications.  
Guest Room, Restaurant, Meeting Room,  
Club, Hall, Hotel Entrance.



### › Technical Drawing



### › Beam Spread

Spot		Medium		Flood	
15°		30°		45°	
ft	ø	ft	ø	ft	ø
3.0	0.72	3.0	1.41	3.0	2.03
9.0	2.15	9.0	4.22	9.0	6.09
15.0	3.58	15.0	7.04	15.0	10.15

**Note:** Product available in other Kelvin temperatures on request.

# Glisten

## Downlight



Glisten is a cylindrical shaped LED downlight, an ideal replacement for conventional store lights, that ensures high energy savings and quality lighting in stores. Specular reflector & power grid / global connectors available with isolated LED driver using ultra bright OSRAM COB.

### › Technical Parameters

<b>Voltage</b>	100 - 277 V AC, 50-60 Hz
<b>Light Source</b>	Osram SOLERIQ.S 19
<b>Operating Position</b>	Non - Swiveling Type
<b>Start Time</b>	Instant
<b>Driver</b>	Stand Alone (Included)
<b>Optics</b>	Reflective Cup Structure
<b>Beam Spread</b>	Spot, Medium, Flood
<b>Dimming</b>	Triac Dimming / 0-10 V Dimming

CRI	Power (W)	CCT (K)	Total Lumen Output (lm)	Finish
>90	15 / 20 / 30 / 40	2700	1800 / 2400 / 3600 / 4800	White
>90	15 / 20 / 30 / 40	3000	1900 / 2520 / 3790 / 5050	White
>90	15 / 20 / 30 / 40	4000	2000 / 2660 / 3990 / 5320	White
>90	15 / 20 / 30 / 40	5000	2100 / 2800 / 4200 / 5600	White

### › Model/Colors

Available in White.



### › Application Areas

Downlight for Indoor Applications.  
Guest Room, Restaurant, Meeting Room,  
Club, Hall, Hotel Entrance.



### › Technical Drawing



### › Beam Spread

Spot	15°		30°		45°	
	ft	ø	ft	ø	ft	ø
3.0	0.72	3.0	1.41	3.0	2.03	
9.0	2.15	9.0	4.22	9.0	6.09	
15.0	3.58	15.0	7.04	15.0	10.15	

**Note:** Product available in other Kelvin temperatures on request.

# Levin

## Downlight



Levin, a square shaped LED surface downlight made of aluminum die cast with high quality powder coated luminaire housing and optimum heat sink. Specular reflector & power grid /global connectors available with isolated LED driver using ultra bright OSRAM COB.

### › Technical Parameters

<b>Voltage</b>	100 - 277 V AC, 50-60 Hz
<b>Light Source</b>	Osram SOLERIQ S 19
<b>Operating Position</b>	Non - Swiveling Type
<b>Start Time</b>	Instant
<b>Driver</b>	Stand Alone (Included)
<b>Optics</b>	Reflective Cup Structure
<b>Beam Spread</b>	Spot, Medium, Flood
<b>Dimming</b>	Triac Dimming / 0-10 V Dimming

CRI	Power (W)	CCT (K)	Total Lumen Output (lm)	Finish
>90	15 / 20 / 30 / 40	2700	1800 / 2400 / 3600 / 4800	White
>90	15 / 20 / 30 / 40	3000	1900 / 2520 / 3790 / 5050	White
>90	15 / 20 / 30 / 40	4000	2000 / 2660 / 3990 / 5320	White
>90	15 / 20 / 30 / 40	5000	2100 / 2800 / 4200 / 5600	White

### › Model/Colors

Available in White.

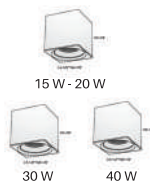


### › Application Areas

Downlight for Indoor Applications.  
Guest Room, Restaurant, Meeting Room,  
Club, Hall, Hotel Entrance.



### › Technical Drawing



### › Beam Spread

Spot		Medium		Flood	
15°		30°		45°	
ft	ø	ft	ø	ft	ø
3.0	0.72	3.0	1.41	3.0	2.03
9.0	2.15	9.0	4.22	9.0	6.09
15.0	3.58	15.0	7.04	15.0	10.15

**Note:** Product available in other Kelvin temperatures on request.

# Bolt

## Downlight

Bolt, a cylindrical shaped LED surface downlight made of aluminum die cast with high quality powder coated luminaire housing and optimum heat sink. Specular reflector & power grid/global connectors available with isolated LED driver using ultra bright OSRAM COB.



### > Technical Parameters

<b>Voltage</b>	100 - 277 V AC, 50-60 Hz
<b>IP Rating</b>	IP65
<b>Light Source</b>	Osram SOLERIQ S 19
<b>Operating Position</b>	Non - Swiveling Type
<b>Start Time</b>	Instant
<b>Driver</b>	Stand Alone (Included)
<b>Optics</b>	Reflective Cup Structure
<b>Beam Spread</b>	Spot, Medium, Flood
<b>Dimming</b>	Triac Dimming / 0-10 V Dimming

CRI	Power (W)	CCT (K)	Total Lumen Output (lm)	Finish
>90	30 / 40 / 50 / 55	2700	3600 / 4800 / 6000 / 6600	Black / White
>90	30 / 40 / 50 / 55	3000	3800 / 5050 / 6320 / 6950	Black / White
>90	30 / 40 / 50 / 55	4000	4000 / 5320 / 6650 / 7315	Black / White
>90	30 / 40 / 50 / 55	5000	4200 / 5600 / 7000 / 7700	Black / White

### > Model/Colors

Available in White & Black.

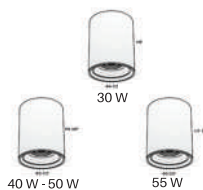


### > Application Areas

Downlight for Indoor Applications.  
Guest Room, Restaurant, Meeting Room,  
Club, Hall, Hotel Entrance.



### > Technical Drawing



### > Beam Spread




Medium			Flood		
20°			40°		
ft	∅		ft	∅	
3.0	1.41		3.0	2.03	
9.0	4.22		9.0	6.09	
15.0	7.04		15.0	10.15	

**Note:** Product available in other Kelvin temperatures on request.

# Pendant Lights

---

Pendant lights are commonly used in stores as ambient or task lights. They are a perfect replacement for traditional store lights and deliver both on style and function. Pendant lights can be used in places such as the bill counter, aisle areas, or changing rooms within a store.

-  Come in varied shapes and sizes to complement different spaces.
-  Their unique designs uplift the aesthetic appeal of your stores.
-  Are highly customizable, low maintenance, and flexible.



# Remus

## Pendant Light

Remus is a technologically advanced LED pendant light that incorporates electronic gear and a high-quality lens with three different beam spreads. While commonly used as a task light, the unique and state-of-the-art design of this luminaire also enhances the overall aesthetics of your store.

### › Technical Parameters

<b>Voltage</b>	100 - 277 V AC, 50-60 Hz
<b>Light Source</b>	Osram SOLERIQ S 19
<b>Operating Position</b>	Swiveling Type
<b>Start Time</b>	Instant
<b>Driver</b>	Stand Alone (Included)
<b>Beam Spread</b>	Spot, Medium, Flood
<b>Dimming</b>	Triac Dimming



CRI	Power (W)	CCT (K)	Total Lumen Output (lm)	Finish
>90	20	2700	1800	Black / White
>90	20	3000	1900	Black / White
>90	20	4000	2000	Black / White
>90	20	5000	2100	Black / White

### › Model/Colors

Available in White & Black.



### › Application Areas

Pendant Light for Indoor Applications.



### › Technical Drawing



### › Beam Spread (Options)

Spot		Medium		Flood	
11°		24°		36°	
ft	Ø	ft	Ø	ft	Ø
3.0	0.72	3.0	1.41	3.0	2.03
9.0	2.15	9.0	4.22	9.0	6.09
15.0	3.58	15.0	7.04	15.0	10.15

**Note:** 1. Product available in other Kelvin temperatures on request.

2. Ceiling cup standard size: 4-3/4". 3. Cable standard length: 2'.



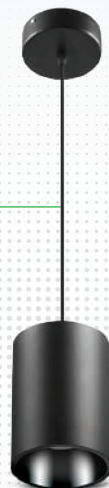
# Aurora

## Pendant Light

Aurora is a technologically advanced LED pendant light that incorporates electronic gear and a high-quality lens with wide beam spread. While commonly used as a task light, the unique and state-of-the-art design of this luminaire also enhances the overall aesthetics of your store.

### > Technical Parameters

<b>Voltage</b>	100 - 277 V AC, 50-60 Hz
<b>Light Source</b>	Osram SOLERIQ S 19
<b>Operating Position</b>	No Swiveling Type
<b>Start Time</b>	Instant
<b>Driver</b>	Stand Alone (Included)
<b>Optics</b>	Reflective Cup Structure
<b>Beam Spread</b>	Spot, Medium, Flood
<b>Dimming</b>	Triac Dimming / 0-10 V Dimming



CRI	Power (W)	CCT (K)	Total Lumen Output (lm)	Finish
>90	8 / 12 / 15 / 20 / 25 / 30 / 40 / 50 / 55	2700	640 / 960 / 1200 / 1600 / 2000 / 2400 / 3200 / 4000 / 4400	Black / White
>90	8 / 12 / 15 / 20 / 25 / 30 / 40 / 50 / 55	3000	680 / 1020 / 1275 / 1700 / 2125 / 2550 / 3400 / 4250 / 4675	Black / White
>90	8 / 12 / 15 / 20 / 25 / 30 / 40 / 50 / 55	4000	720 / 1080 / 1350 / 1800 / 2250 / 2700 / 3600 / 4500 / 4950	Black / White
>90	8 / 12 / 15 / 20 / 25 / 30 / 40 / 50 / 55	5000	760 / 1140 / 1425 / 1900 / 2375 / 2850 / 3800 / 4750 / 5225	Black / White

### > Model/Colors

Available in White & Black.

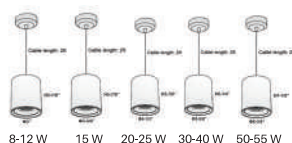


### > Application Areas

Pendant Light for Indoor Applications.  
Guest Room, Restaurant, Meeting Room,  
Club, Hall, Hotel Entrance



### > Technical Drawing



### > Beam Spread (Options)

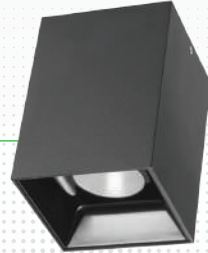
Spot		Medium		Flood	
15°		30°		45°	
ft	ft	ft	ft	ft	ft
3.0	0.72	3.0	1.41	3.0	2.03
9.0	2.15	9.0	4.32	9.0	6.09
15.0	3.58	15.0	7.04	15.0	10.15

**Note:** 1. Product available in other Kelvin temperatures on request.

2. Reflector color: Black/White/Silver option available. 3. Ceiling cup standard size: 4-3/4"; Cable standard length: 2'.

# Eos

## Pendant Light



Eos is a technologically advanced LED pendant light that incorporates electronic gear and a high-quality lens with three different beam spreads. While commonly used as a task light, the unique and state-of-the-art design of this luminaire also enhances the overall aesthetics of your store.

### > Technical Parameters

<b>Voltage</b>	100 - 277 V AC, 50-60 Hz
<b>Light Source</b>	Osram SOLERIQ S 19
<b>Operating Position</b>	No Swiveling Type
<b>Start Time</b>	Instant
<b>Driver</b>	Stand Alone (Included)
<b>Optics</b>	Reflective Cup Structure
<b>Beam Spread</b>	Spot, Medium, Flood
<b>Dimming</b>	Triac Dimming / 0-10 V Dimming

CRI	Power (W)	CCT (K)	Total Lumen Output (lm)	Finish
>90	8 / 15 / 20 / 30	2700	640 / 1200 / 1600 / 2400	Black / White
>90	8 / 15 / 20 / 30	3000	680 / 1275 / 1700 / 2550	Black / White
>90	8 / 15 / 20 / 30	4000	720 / 1350 / 1800 / 2700	Black / White
>90	8 / 15 / 20 / 30	5000	760 / 1425 / 1900 / 2850	Black / White

### > Model/Colors

Available in White & Black.



### > Application Areas

Pendant Light for Indoor Applications.  
Guest Room, Restaurant, Meeting Room,  
Club, Hall, Hotel Entrance



### > Technical Drawing



### > Beam Spread (Options)

Spot		Medium		Flood	
15°		30°		45°	
ft	ft	ft	ft	ft	ft
3.0	0.72	3.0	1.41	3.0	2.03
9.0	2.15	9.0	4.22	9.0	6.09
15.0	3.58	15.0	7.04	15.0	10.15

**Note:** Product available in other Kelvin temperatures on request.

# Daze

## Pendant Light

Daze is a technologically advanced LED pendant light that incorporates electronic gear and a high-quality lens with wide beam spread. While commonly used as a task light, the unique and state-of-the-art design of this luminaire also enhances the overall aesthetics of your store.

### > Technical Parameters

<b>Voltage</b>	100 - 277 V AC, 50-60 Hz
<b>Light Source</b>	Osram SOLERIQ S 19
<b>Operating Position</b>	No Swiveling Type
<b>Start Time</b>	Instant
<b>Driver</b>	Stand Alone (Included)
<b>Optics</b>	Reflective Cup Structure
<b>Beam Spread</b>	Spot, Medium, Flood
<b>Dimming</b>	Triac Dimming / 0-10 V Dimming



CRI	Power (W)	CCT (K)	Total Lumen Output (lm)	Finish
>90	8 / 15 / 20 / 30 / 40	2700	640 / 1200 / 1600 / 2400 / 3200	Black / White
>90	8 / 15 / 20 / 30 / 40	3000	680 / 1275 / 1700 / 2550 / 3400	Black / White
>90	8 / 15 / 20 / 30 / 40	4000	720 / 1350 / 1800 / 2700 / 3600	Black / White
>90	8 / 15 / 20 / 30 / 40	5000	760 / 1425 / 1900 / 2850 / 3800	Black / White

### > Model/Colors

Available in White & Black.

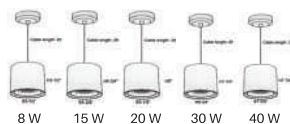


### > Application Areas

Pendant Light for Indoor Applications.  
Guest Room, Restaurant, Meeting Room,  
Club, Hall, Hotel Entrance



### > Technical Drawing



### > Beam Spread (Options)

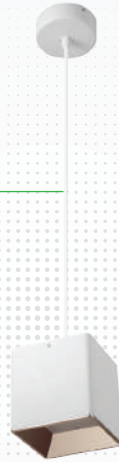
Spot		Medium		Flood	
ft	°	ft	°	ft	°
3.0	0.72	3.0	1.41	3.0	2.03
9.0	2.15	9.0	4.22	9.0	6.09
15.0	3.58	15.0	7.04	15.0	10.15

**Note:** 1. Product available in other Kelvin temperatures on request.  
2. Ceiling cup standard size: 4-3/4"; Cable standard length: 2'.

# Mica

## Pendant Light

Mica is a technologically advanced LED pendant light that incorporates electronic gear and a high-quality lens with wide beam spread. While commonly used as a task light, the unique and state-of-the-art design of this luminaire also enhances the overall aesthetics of your store.



### > Technical Parameters

<b>Voltage</b>	100 - 277 V AC, 50-60 Hz
<b>Light Source</b>	Osram SOLERIQ S 19
<b>Operating Position</b>	No Swiveling Type
<b>Start Time</b>	Instant
<b>Driver</b>	Stand Alone (Included)
<b>Optics</b>	Reflective Cup Structure
<b>Beam Spread</b>	Spot, Medium, Flood
<b>Dimming</b>	Triac Dimming / 0-10 V Dimming

CRI	Power (W)	CCT (K)	Total Lumen Output (lm)	Finish
>90	8 / 15 / 20 / 30 / 40	2700	640 / 1200 / 1600 / 2400 / 3200	White
>90	8 / 15 / 20 / 30 / 40	3000	680 / 1275 / 1700 / 2550 / 3400	White
>90	8 / 15 / 20 / 30 / 40	4000	720 / 1350 / 1800 / 2700 / 3600	White
>90	8 / 15 / 20 / 30 / 40	5000	760 / 1425 / 1900 / 2850 / 3800	White

### > Model/Colors

Available in White.

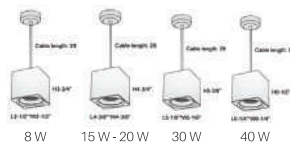


### > Application Areas

Pendant Light for Indoor Applications.  
Guest Room, Restaurant, Meeting Room,  
Club, Hall, Hotel Entrance



### > Technical Drawing



### > Beam Spread (Options)

Spot		Medium		Flood	
ft	15°	ft	30°	ft	45°
3.0	0.72	3.0	1.41	3.0	2.03
9.0	2.15	9.0	4.22	9.0	6.09
15.0	3.58	15.0	7.04	15.0	10.15

- Note:** 1. Product available in other Kelvin temperatures on request.  
2. Ceiling cup standard size: 4-3/4"; Cable standard length: 2'.

# Flaxo

## Pendant Light

Flaxo is a technologically advanced LED pendant light that incorporates electronic gear and a high-quality lens with wide beam spread. While commonly used as a task light, the unique and state-of-the-art design of this luminaire also enhances the overall aesthetics of your store.

### > Technical Parameters

<b>Voltage</b>	100 - 277 V AC, 50-60 Hz
<b>IP Rating</b>	IP65
<b>Light Source</b>	Osram SOLERIQ S 19
<b>Operating Position</b>	No Swiveling Type
<b>Start Time</b>	Instant
<b>Driver</b>	Stand Alone (Included)
<b>Optics</b>	Reflective Cup Structure
<b>Beam Spread</b>	Medium, Flood
<b>Dimming</b>	Triac Dimming / 0-10 V Dimming



CRI	Power (W)	CCT (K)	Total Lumen Output (lm)	Finish
>90	8 / 15 / 20 / 30 / 40 / 50 / 55	2700	640 / 1200 / 1800 / 2400 / 3200 / 4000 / 4400	Black / White
>90	8 / 15 / 20 / 30 / 40 / 50 / 55	3000	680 / 1275 / 1700 / 2550 / 3400 / 4250 / 4675	Black / White
>90	8 / 15 / 20 / 30 / 40 / 50 / 55	4000	720 / 1350 / 1800 / 2700 / 3600 / 4500 / 4950	Black / White
>90	8 / 15 / 20 / 30 / 40 / 50 / 55	5000	760 / 1425 / 1900 / 2850 / 3800 / 4750 / 5225	Black / White

### > Model/Colors

Available in White & Black.

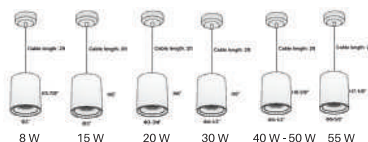


### > Application Areas

Pendant Light for Indoor Applications.  
Guest Room, Restaurant, Meeting Room,  
Club, Hall, Hotel Entrance



### > Technical Drawing



### > Beam Spread (Options)

Medium		Flood	
20°		40°	
ft	ft	ft	ft
3.0	1.41	3.0	2.03
9.0	4.22	9.0	6.09
15.0	7.04	15.0	10.15

**Note:** Product available in other Kelvin temperatures on request.



# Cross Reference Guide

## Track Lights



IKIO		Other Brand
<p><b>Amplic</b> Track Light</p> 		
<b>Wattage</b>	20 W	20 W
<b>Lumen Output</b>	1900 lm	1200 lm

IKIO		Other Brand
<p><b>Ornate</b> Track Light</p> 		
<b>Wattage</b>	30 W	30 W
<b>Lumen Output</b>	2450 lm	1600 lm

IKIO		Other Brand
<p><b>Optik</b> Track Light</p> 		
<b>Wattage</b>	15 W / 20 W	20 W
<b>Lumen Output</b>	2100 lm / 3150 lm	1500 lm

IKIO		Other Brand
<p><b>Rimin</b> Projector Light</p> 		
<b>Wattage</b>	20 W / 30 W	30 W
<b>Lumen Output</b>	1900 lm / 2850 lm	1700 lm

IKIO		Other Brand
<p><b>Trang</b> Track Light</p> 		
<b>Wattage</b>	15 W / 20 W / 30 W	25 W
<b>Lumen Output</b>	1350 lm / 1800 lm / 2700 lm	1200 lm



IKIO		Other Brand
<p><b>Prime</b> Track Light</p> 		
<b>Wattage</b>	20 W	20 W
<b>Lumen Output</b>	2000 lm	1400 lm



IKIO		Other Brand
<p><b>Bolide</b> Track Light</p> 		
<b>Wattage</b>	30 W	25 W
<b>Lumen Output</b>	3150 lm	1200 lm

IKIO		Other Brand
<p><b>Avis</b> Track Light</p> 		
<b>Wattage</b>	28 W / 36 W	36 W
<b>Lumen Output</b>	2996 lm / 3852 lm	1800 lm



# Cross Reference Guide

## Down Lights



IKIO		Other Brand
<p><b>Lucent</b> Downlight</p>  		
<b>Wattage</b>	25 W / 28 W / 30 W	30 W
<b>Lumen Output</b>	2500 lm / 2800 lm / 3200 lm	2500 lm



IKIO		Other Brand
<p><b>Scrawn</b> Downlight</p>  		
<b>Wattage</b>	25 W / 30 W	30 W
<b>Lumen Output</b>	4600 lm / 5520 lm	3000 lm



IKIO		Other Brand
<p><b>Glim</b> Downlight</p>  		
<b>Wattage</b>	30 W / 40 W / 50 W	50 W
<b>Lumen Output</b>	3150 lm / 4200 lm / 5250 lm	3500 lm

IKIO		Other Brand
<p><b>Lumos</b> Downlight</p>  		
<b>Wattage</b>	12 W / 15 W / 20 W	20 W
<b>Lumen Output</b>	1080 lm / 1350 lm / 1800 lm	1400 lm

IKIO		Other Brand
<p><b>Odin</b> Downlight</p>  		
<b>Wattage</b>	24 W / 40 W / 60 W	40 W
<b>Lumen Output</b>	2160 lm / 3600 lm / 5400 lm	3000 lm

IKIO		Other Brand
<p><b>Pistone</b> Downlight</p>  		
<b>Wattage</b>	40 W / 50 W / 55 W	50 W
<b>Lumen Output</b>	3800 lm / 4750 lm / 5225 lm	3000 lm

IKIO		Other Brand
<p><b>Avant</b> Downlight</p>  		
<b>Wattage</b>	8 W / 15 W / 25 W	25 W
<b>Lumen Output</b>	840 lm / 1575 lm / 2625 lm	1500 lm

IKIO		Other Brand
<p><b>Cubra</b> Downlight</p>  		
<b>Wattage</b>	20 W / 30 W	30 W
<b>Lumen Output</b>	1900 lm / 2850 lm	2000 lm

# Know More About IKIO

IKIO is one of the fastest-growing LED brands in America with a successful track record of being a reliable and trusted lighting partner. IKIO combines innovative ideas, expertise & advanced technology to create cutting-edge lighting solutions that are changing the landscape of the lighting industry. We are ideally positioned to offer the right solutions for all your lighting requirements because of our holistic approach and vertically integrated infrastructure.

1



America's **top 500 fastest-growing companies** as per inc 5000.

2



**Headquartered in Indianapolis, Indiana:** a strategic location that enables us to serve customers nationwide.

3



An expansive collection of **over 1000 DLC qualified products.**

4



Serving **Commercial, Industrial, Hazardous Locations, as well as Horticulture Applications.**

5



**6 World-class vertically-integrated manufacturing facilities** in different countries.

6



Existing clients — **H&M, Adidas, Hilton, Reebok, etc.**





**Store**  
Lights

A graphic element consisting of a solid green circle partially enclosed by a thin green line that forms a circle around it, positioned to the right of the text.



(1) 844-533-4546 | [www.retail.ikioledlighting.com](http://www.retail.ikioledlighting.com)  
8470 Allison Pointe Blvd, Suite 128 Indianapolis, IN 46250